

191



The Peninsula
BURSWOOD



STANDARD

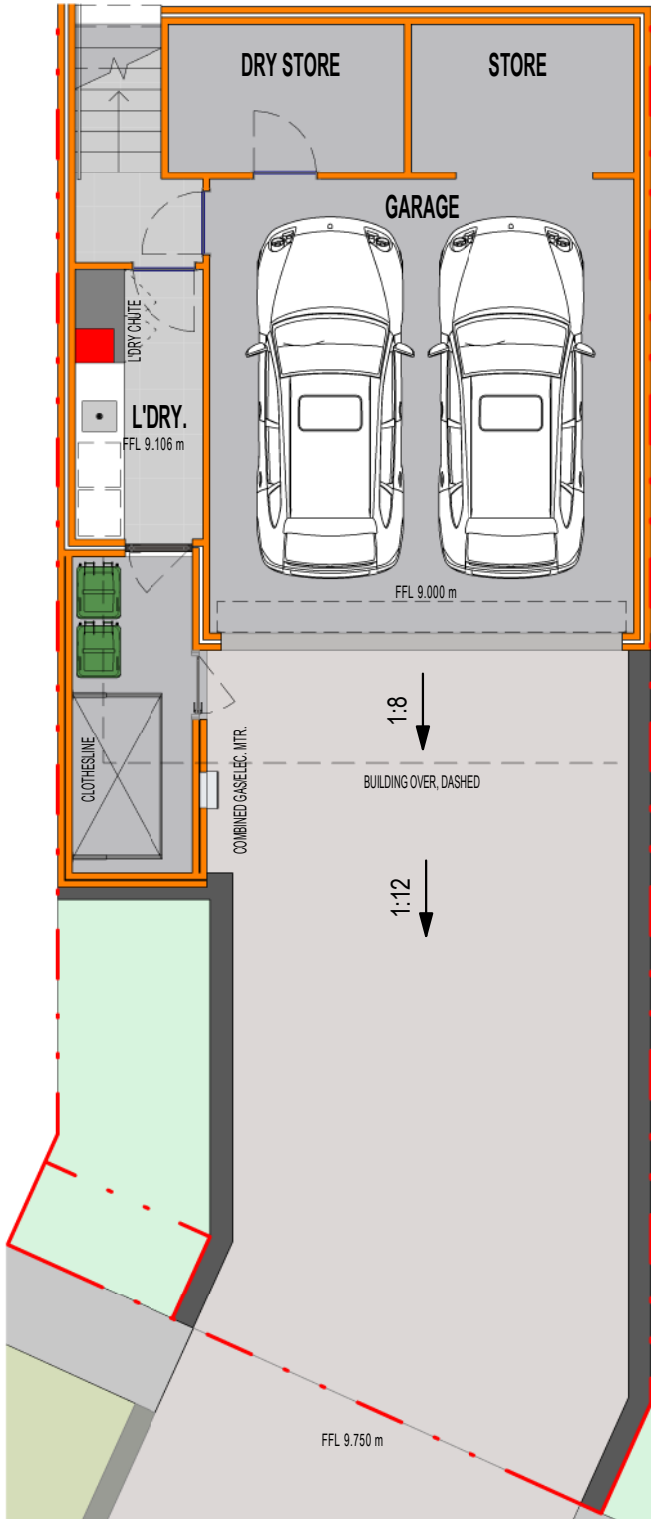
AREA SCHEDULE (TOTAL)

Total Building Area (Under Roof)	322m²
Total Internal Area (Including Garage)	309m²
Total Internal Living Area	275m²

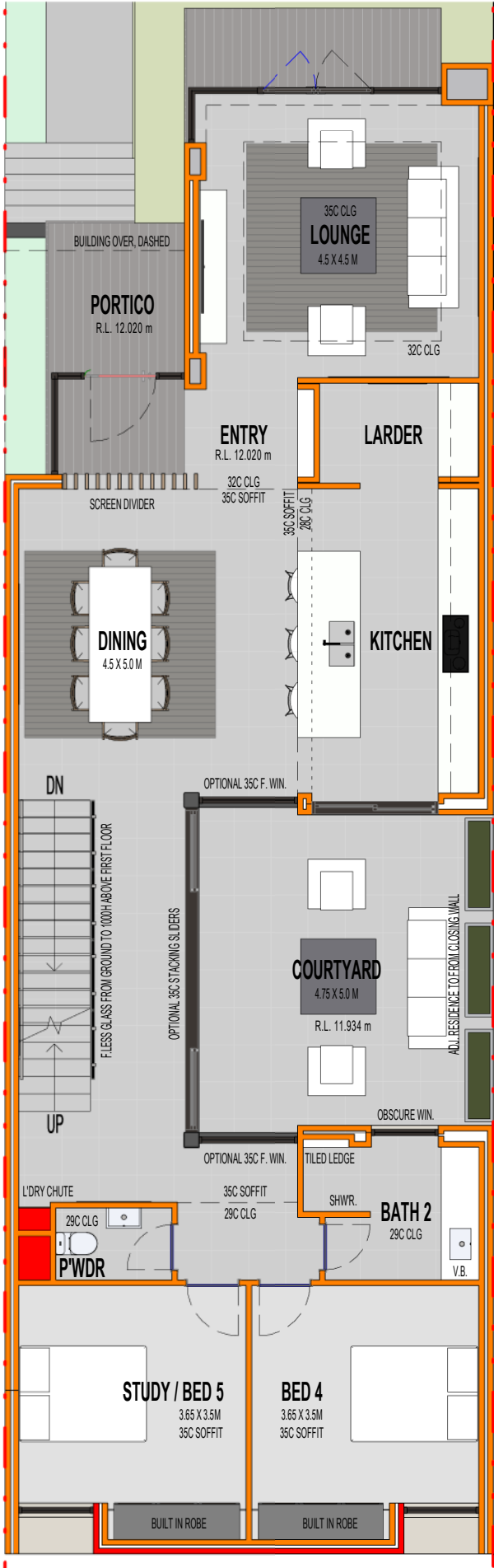
AREA SCHEDULE (DETAILED)

Basement Garage Area	34m²
Stores / Stair / Laundry Area	23m²
Ground Floor Area	128m²
First Floor Area	124m²
Balcony Area	13m²
Courtyard (External)	24m²

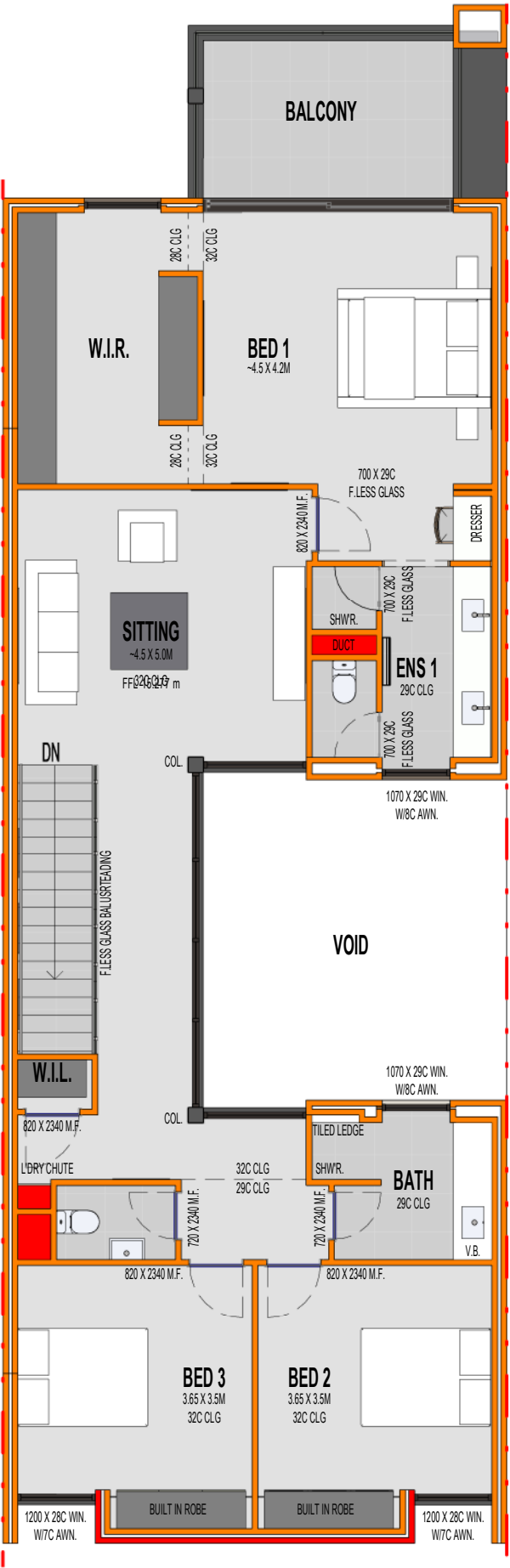
DISCLAIMER
Please note that this floor plan was produced prior to completion of construction. The information contained herein is believed to be correct but is not guaranteed. Dimensions and areas are approximate. Changes will undoubtedly be made during development and subject to change without notice in accordance with the provision of the contract for sale. The furniture and furnishings depicted are not included with any sale and furnishings should not be taken to indicate the final position of power points, TV connection points and the like. Prospective purchasers must refer to the contract for sale for the list of inclusions. All graphics, including tile layout, balustrades, planting, louvers and sunshading devices, are indicative only. NOTE: Bulkheads necessary for services are not depicted. Floor plans are at an unspecified scale. Plans do not show additional features within each lot such as hot water systems, service yards, letterboxes and side and rear retaining walls. Purchaser option noted on floor plans is located on some lots only and is available at purchaser cost only at time of sale. 30/11/2017 [A]



BASEMENT



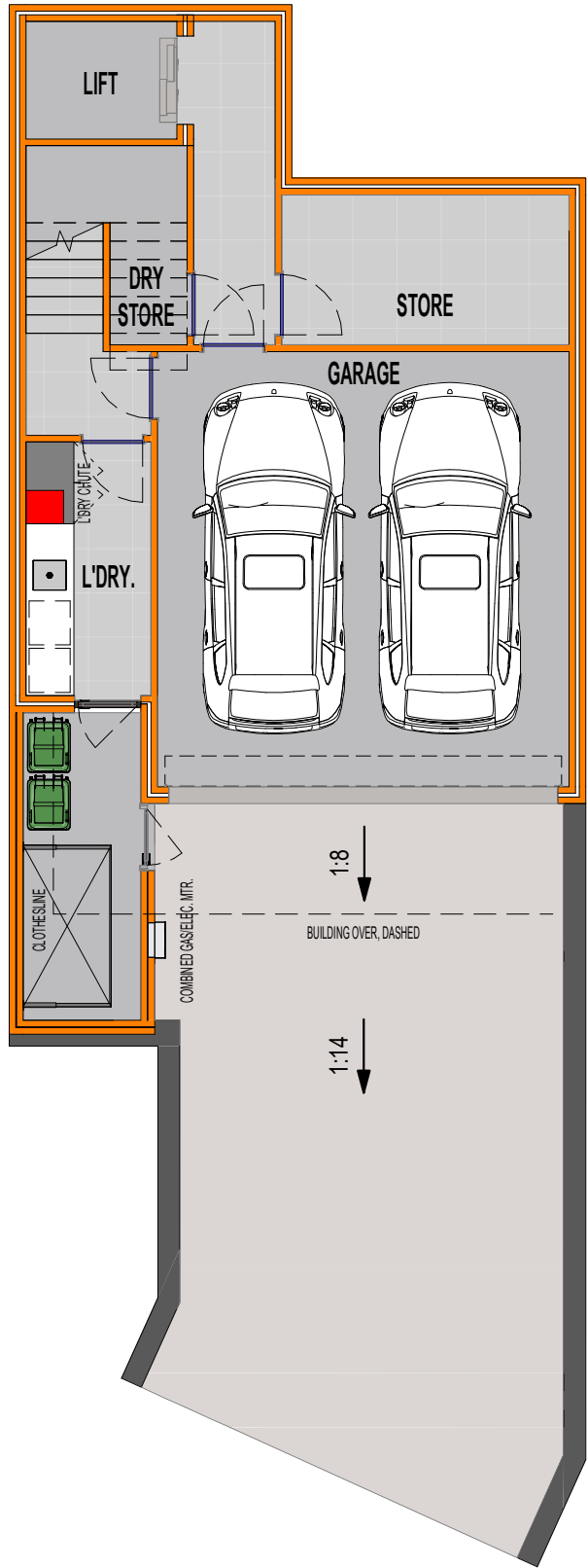
GROUND



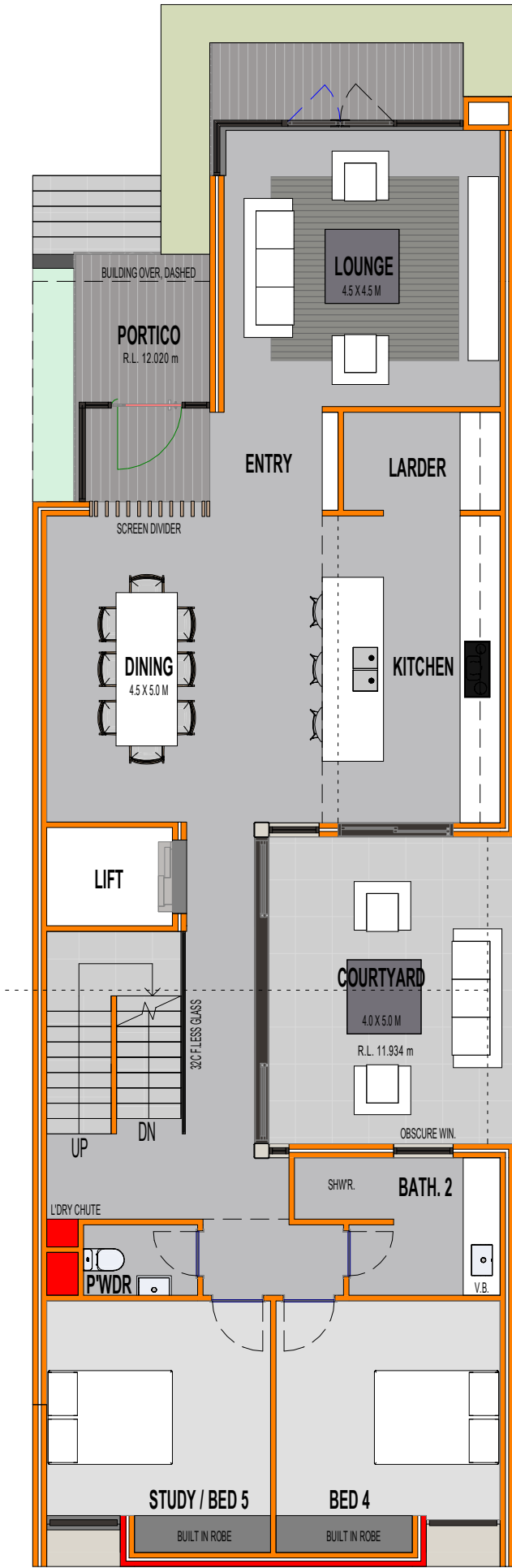
FIRST



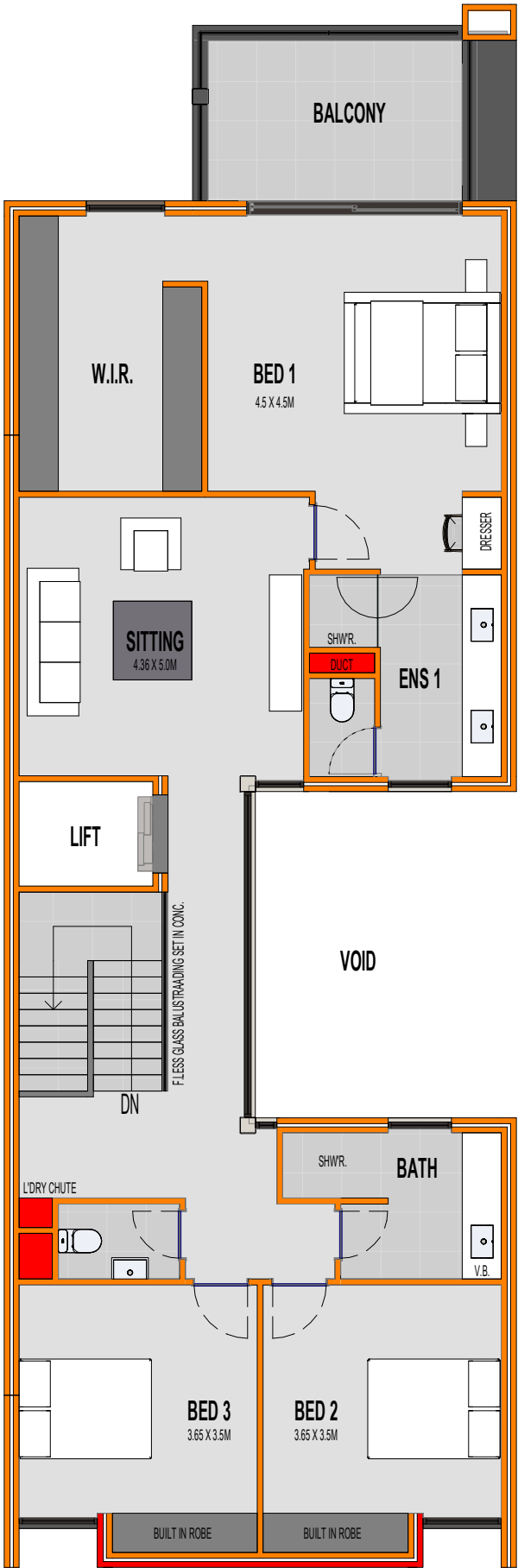
OPTION 1:
3 X STOP LIFT



BASEMENT



GROUND

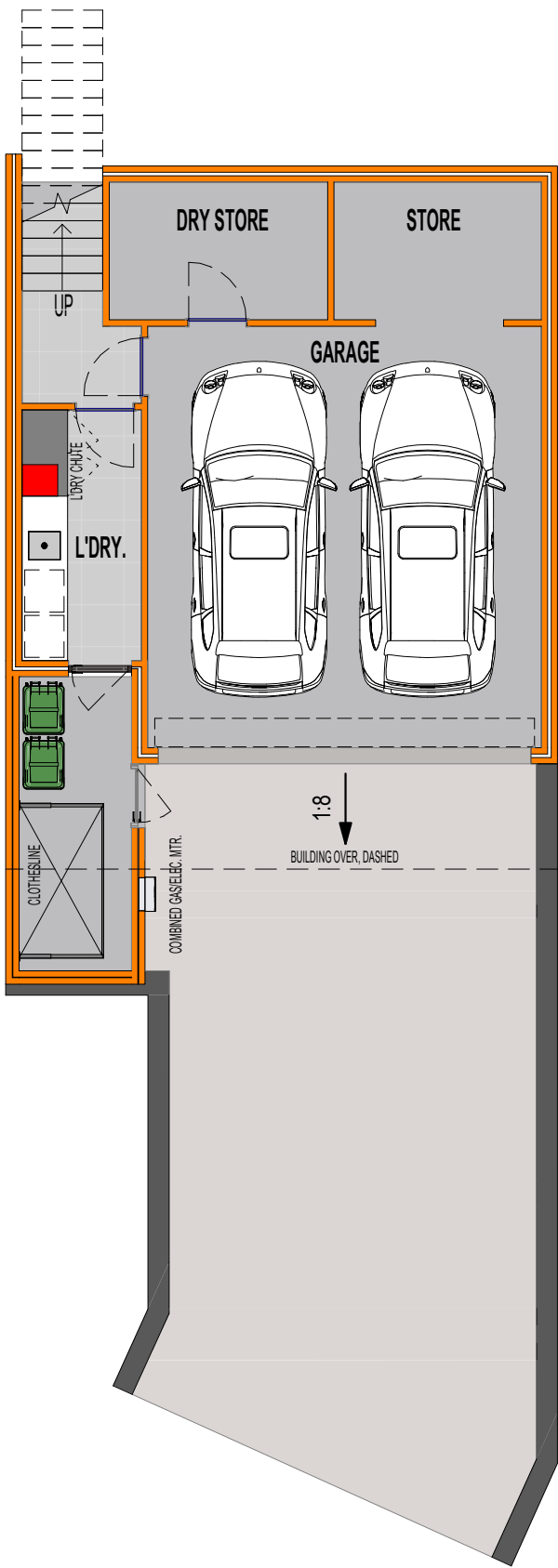


FIRST

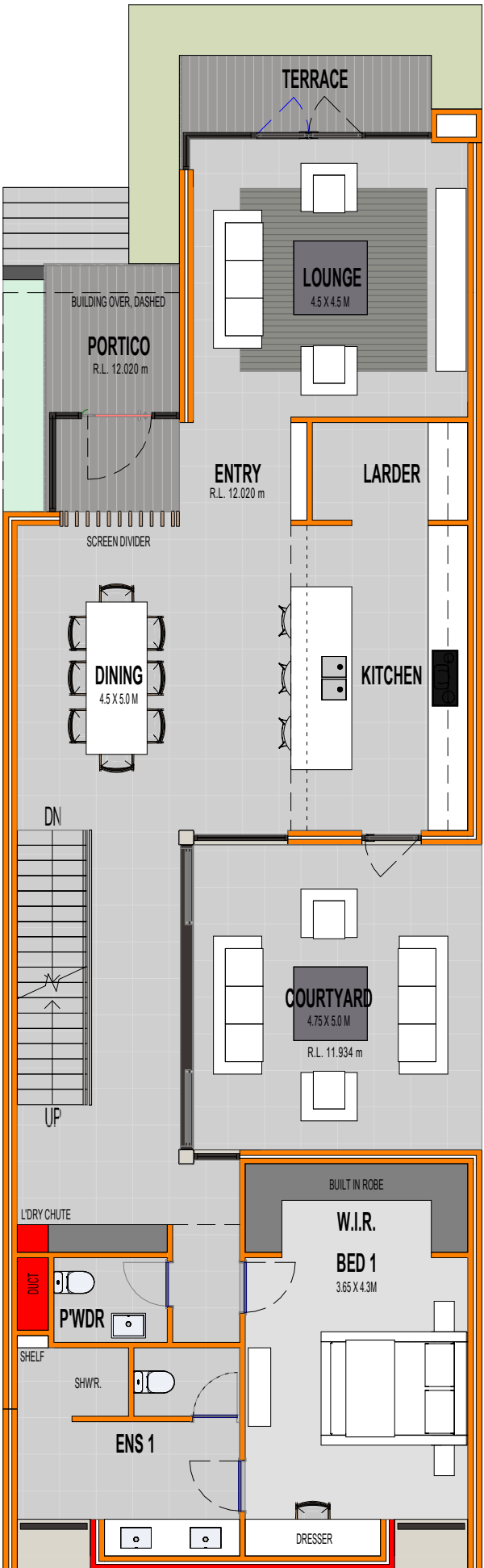
DISCLAIMER
Please note that this floor plan was produced prior to completion of construction. The information contained herein is believed to be correct but is not guaranteed. Dimensions and areas are approximate. Changes will undoubtedly be made during development and subject to change without notice in accordance with the provision of the contract for sale. The furniture and furnishings depicted are not included with any sale and furnishings should not be taken to indicate the final position of power points, TV connection points and the like. Prospective purchasers must refer to the contract for sale for the list of inclusions. All graphics, including tile layout, balustrades, planting, louvres and sunshading devices, are indicative only. NOTE: Bulkheads necessary for services are not depicted. Floor plans are at an unspecified scale. Plans do not show additional features within each lot such as hot water systems, service yards, letterboxes and side and rear retaining walls. Purchaser option noted on floor plans is located on some lots only and is available at purchaser cost only at time of sale. 30/11/2017 [A]



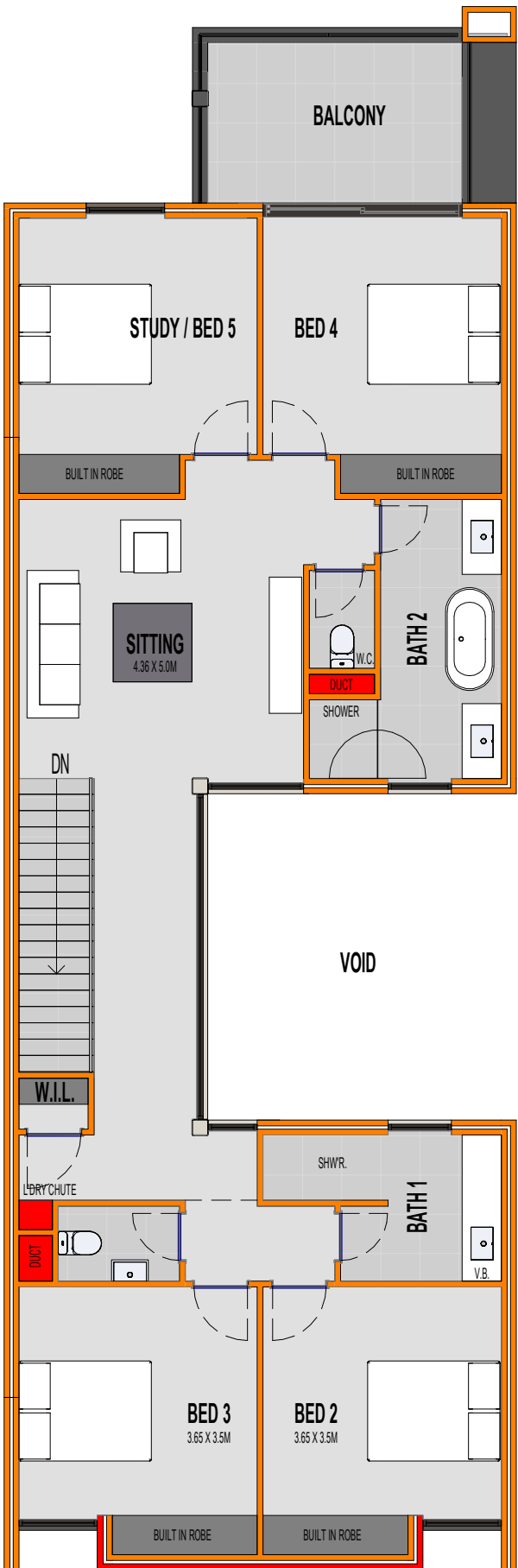
OPTION 2:
MASTER ON GROUND
BATH TO BATH 2



BASEMENT



GROUND

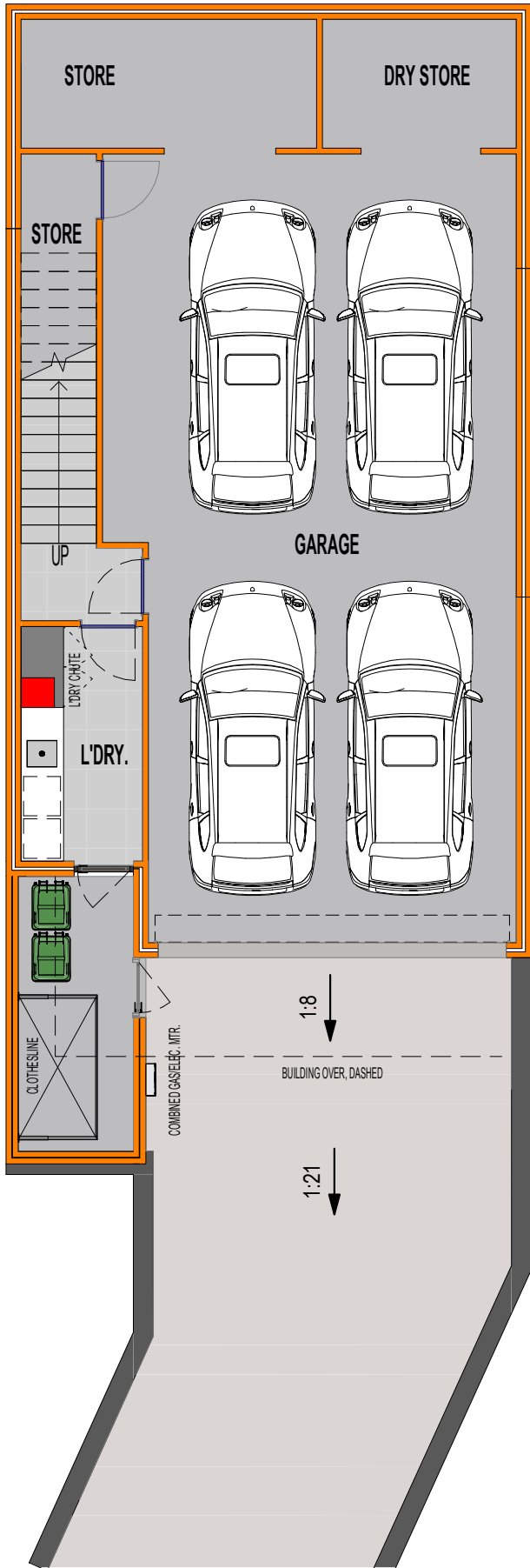


FIRST

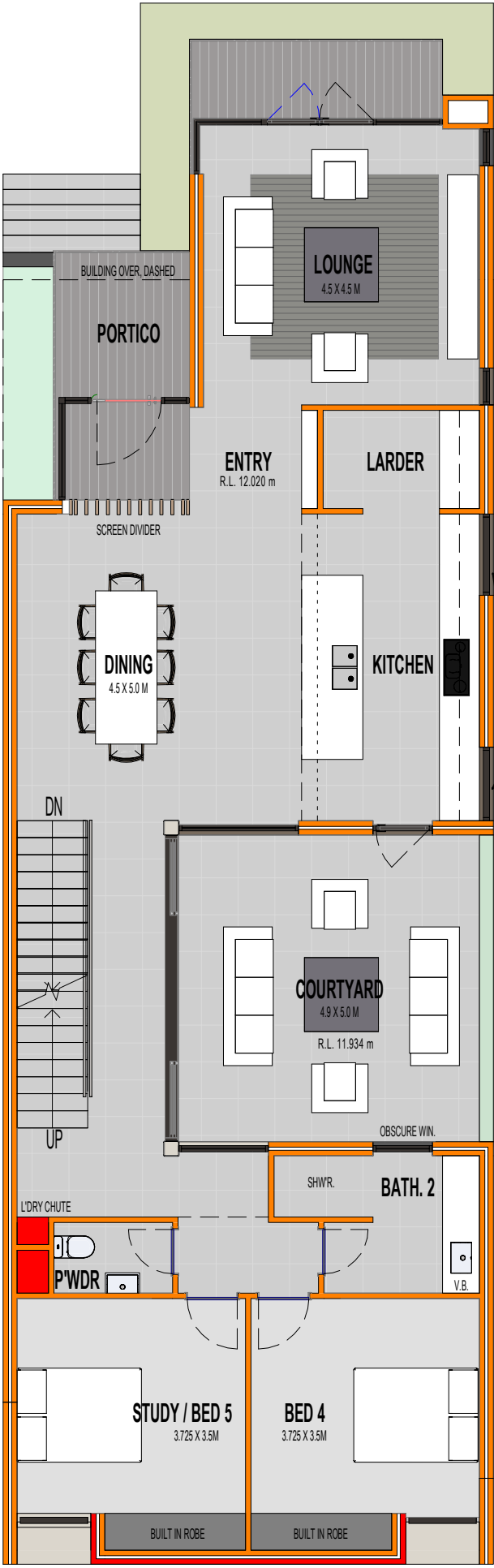
DISCLAIMER
Please note that this floor plan was produced prior to completion of construction. The information contained herein is believed to be correct but is not guaranteed. Dimensions and areas are approximate. Changes will undoubtedly be made during development and subject to change without notice in accordance with the provision of the contract for sale. The furniture and furnishings depicted are not included with any sale and furnishings should not be taken to indicate the final position of power points, TV connection points and the like. Prospective purchasers must refer to the contract for sale for the list of inclusions. All graphics, including tile layout, balustrades, planting, louvres and sunshading devices, are indicative only. NOTE: Bulkheads necessary for services are not depicted. Floor plans are at an unspecified scale. Plans do not show additional features within each lot such as hot water systems, service yards, letterboxes and side and rear retaining walls. Purchaser option noted on floor plans is located on some lots only and is available at purchaser cost only at time of sale. 30/11/2017 [A]



OPTION 3:
4 CAR GARAGE



BASEMENT



GROUND

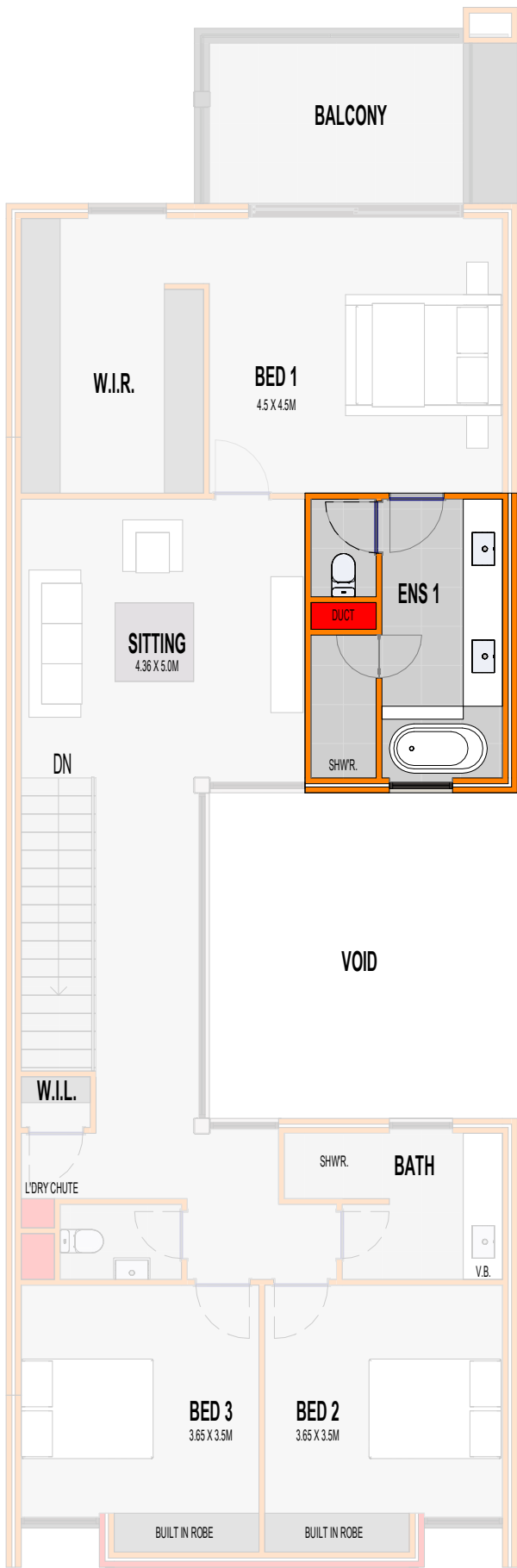


FIRST

DISCLAIMER
Please note that this floor plan was produced prior to completion of construction. The information contained herein is believed to be correct but is not guaranteed. Dimensions and areas are approximate. Changes will undoubtedly be made during development and subject to change without notice in accordance with the provision of the contract for sale. The furniture and furnishings depicted are not included with any sale and furnishings should not be taken to indicate the final position of power points, TV connection points and the like. Prospective purchasers must refer to the contract for sale for the list of inclusions. All graphics, including tile layout, balustrades, planting, louvres and sunshading devices, are indicative only. NOTE: Bulkheads necessary for services are not depicted. Floor plans are at an unspecified scale. Plans do not show additional features within each lot such as hot water systems, service yards, letterboxes and side and rear retaining walls. Purchaser option noted on floor plans is located on some lots only and is available at purchaser cost only at time of sale. 30/11/2017 [A]



OPTION 4:
ALTERNATE ENSUITE
1 (INC. BATH) -
FIRST FLOOR

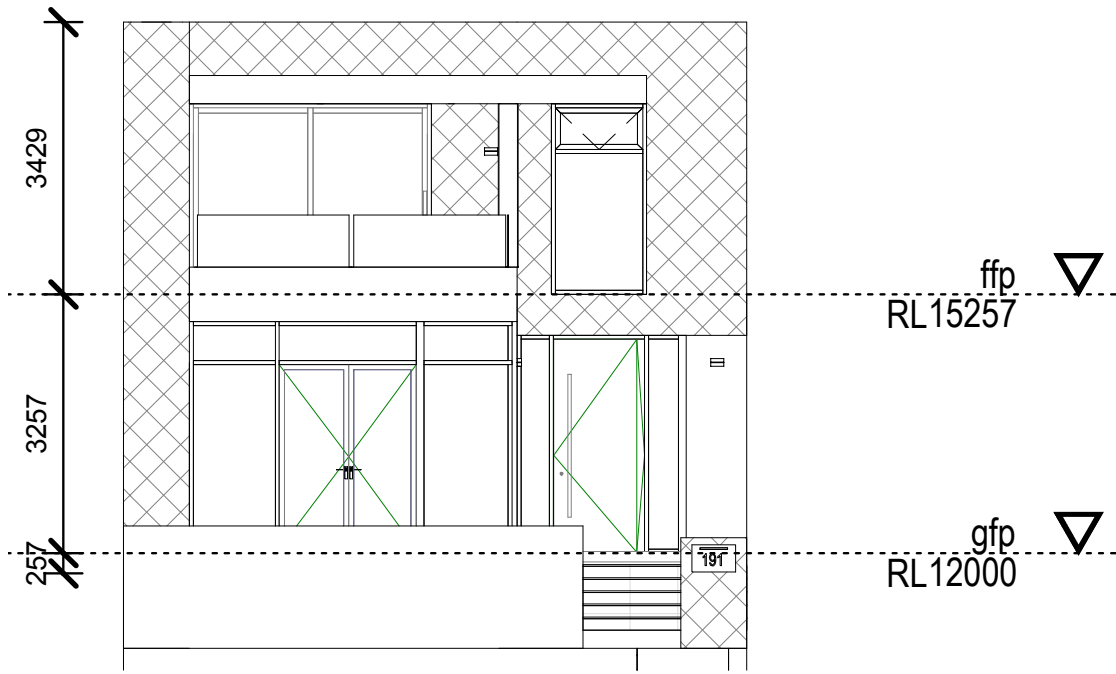


FIRST

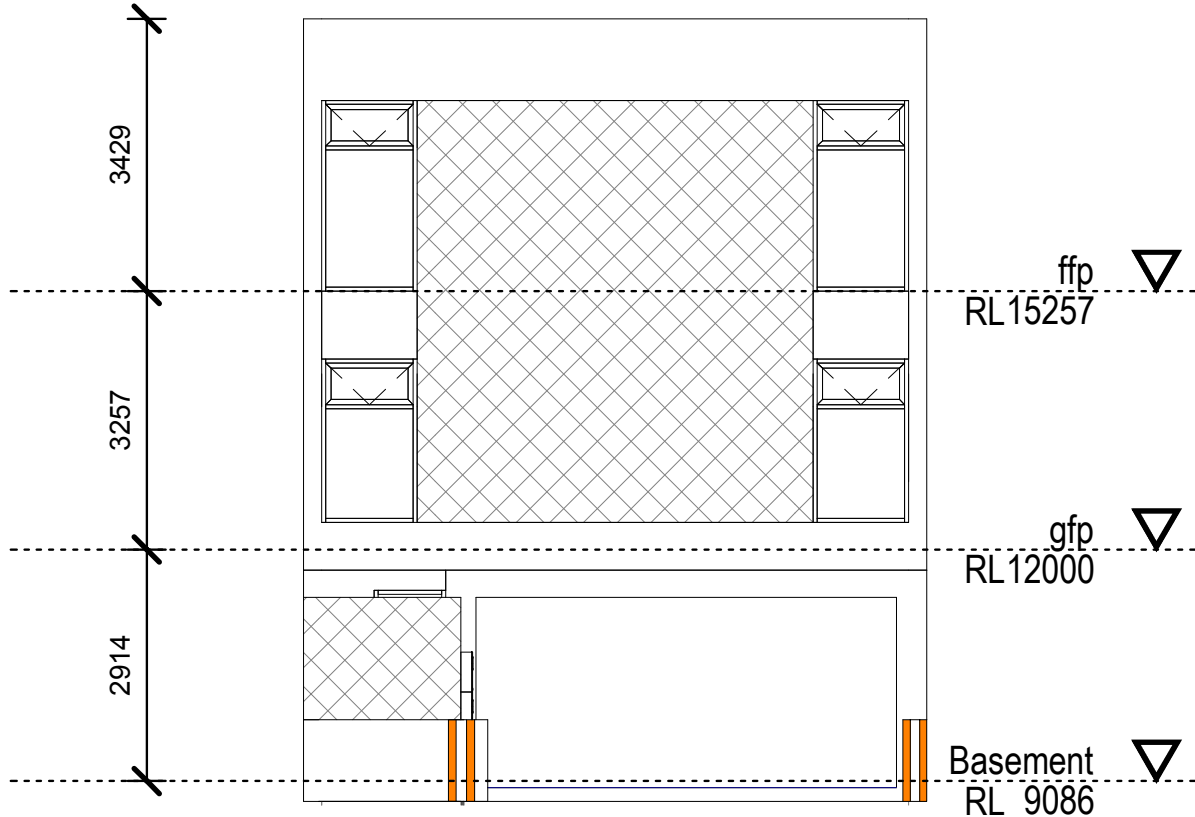
DISCLAIMER
Please note that this floor plan was produced prior to completion of construction. The information contained herein is believed to be correct but is not guaranteed. Dimensions and areas are approximate. Changes will undoubtedly be made during development and subject to change without notice in accordance with the provision of the contract for sale. The furniture and furnishings depicted are not included with any sale and furnishings should not be taken to indicate the final position of power points, TV connection points and the like. Prospective purchasers must refer to the contract for sale for the list of inclusions. All graphics, including tile layout, balustrades, planting, louvres and sunshading devices, are indicative only. NOTE: Bulkheads necessary for services are not depicted. Floor plans are at an unspecified scale. Plans do not show additional features within each lot such as hot water systems, service yards, letterboxes and side and rear retaining walls. Purchaser option noted on floor plans is located on some lots only and is available at purchaser cost only at time of sale. 30/11/2017 [A]



ELEVATIONS



EAST



WEST

DISCLAIMER
Please note that this floor plan was produced prior to completion of construction. The information contained herein is believed to be correct but is not guaranteed. Dimensions and areas are approximate. Changes will undoubtedly be made during development and subject to change without notice in accordance with the provision of the contract for sale. The furniture and furnishings depicted are not included with any sale and furnishings should not be taken to indicate the final position of power points, TV connection points and the like. Prospective purchasers must refer to the contract for sale for the list of inclusions. All graphics, including tile layout, balustrades, planting, louvres and sunshading devices, are indicative only. NOTE: Bulkheads necessary for services are not depicted. Floor plans are at an unspecified scale. Plans do not show additional features within each lot such as hot water systems, service yards, letterboxes and side and rear retaining walls. Purchaser option noted on floor plans is located on some lots only and is available at purchaser cost only at time of sale. 30/11/2017 [A]



