

# 186



The Peninsula  
BURSWOOD



# STANDARD



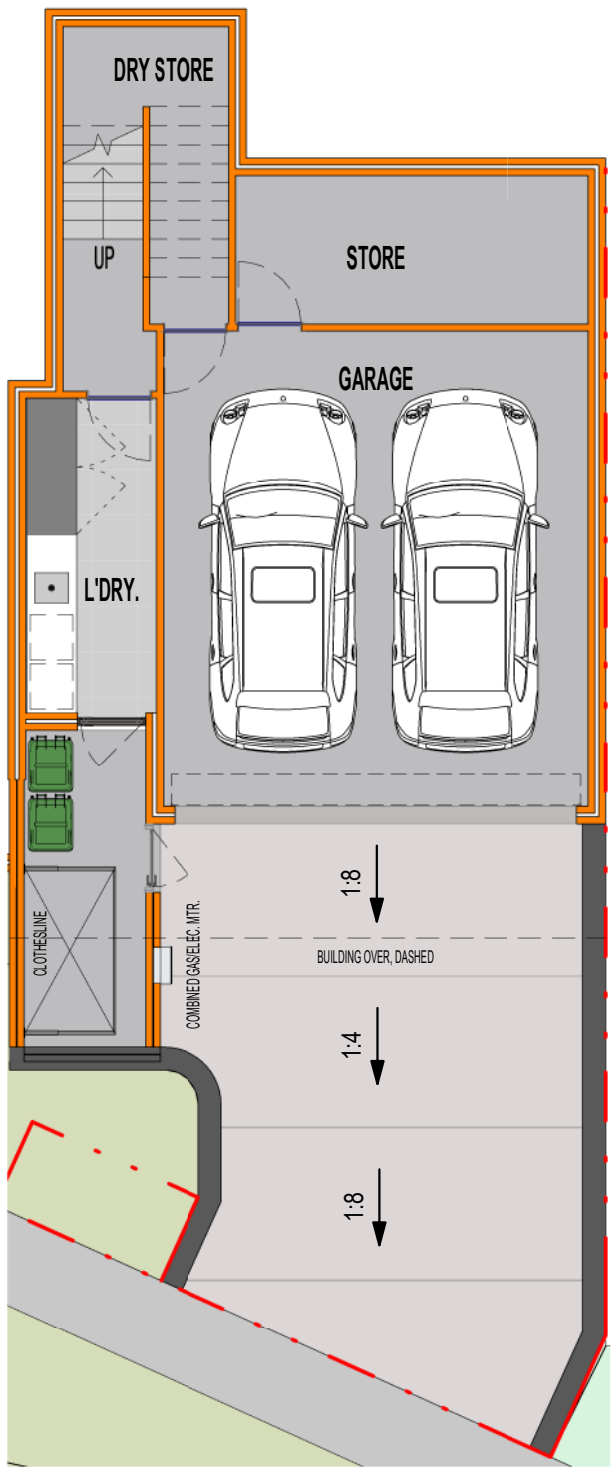
## AREA SCHEDULE (TOTAL)

Total Building Area (Under Roof)	281m <sup>2</sup>
Total Internal Area (Including Garage)	274m <sup>2</sup>
Total Internal Living Area	239m <sup>2</sup>

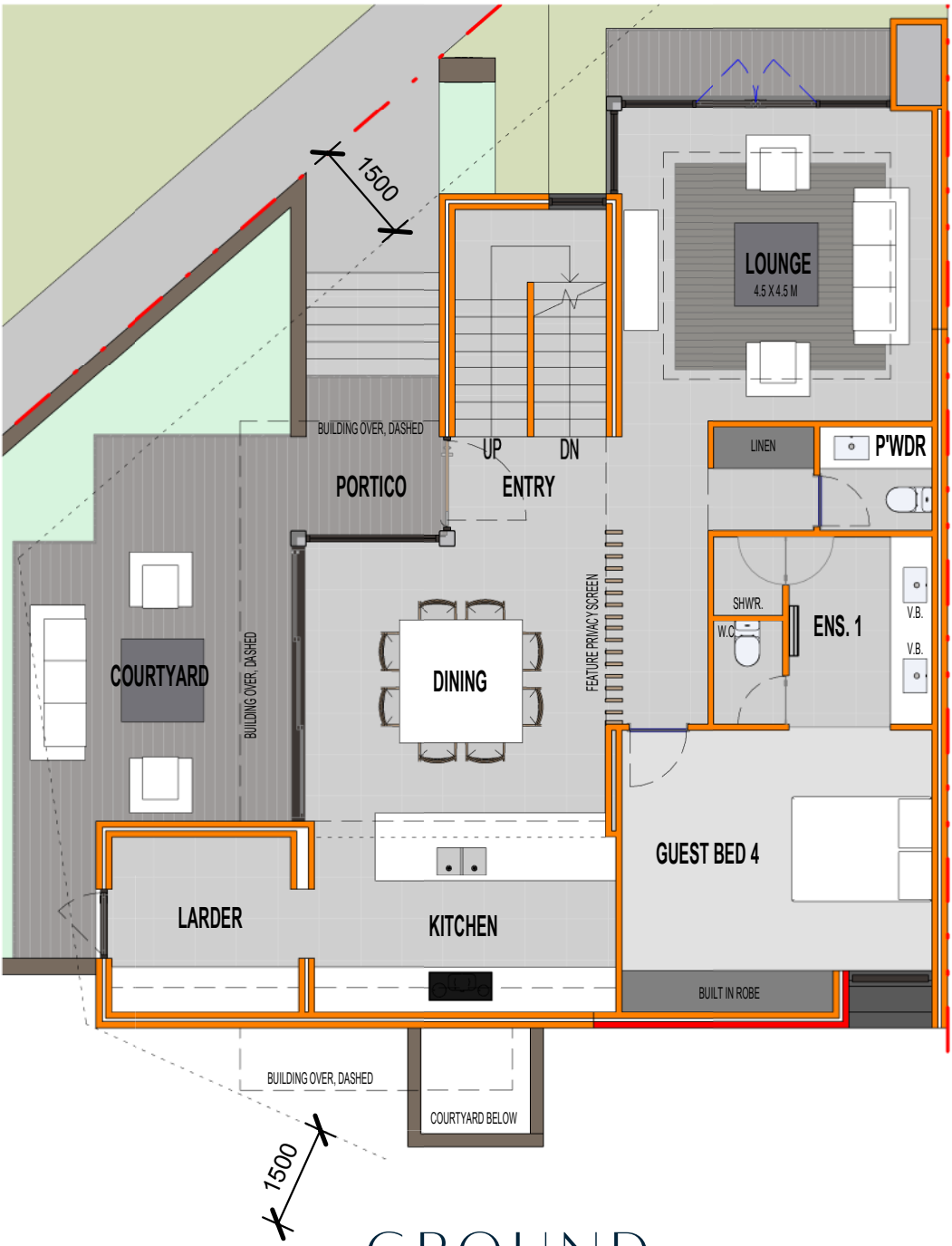
## AREA SCHEDULE (DETAILED)

Basement Garage Area	35m <sup>2</sup>
Stores / Stair / Laundry Area	26m <sup>2</sup>
Ground Floor Area	108m <sup>2</sup>
First Floor Area	105m <sup>2</sup>
Balcony Area	7m <sup>2</sup>
Courtyard (External)	23m <sup>2</sup>

**DISCLAIMER**  
Please note that this floor plan was produced prior to completion of construction. The information contained herein is believed to be correct but is not guaranteed. Dimensions and areas are approximate. Changes will undoubtedly be made during development and subject to change without notice in accordance with the provision of the contract for sale. The furniture and furnishings depicted are not included with any sale and furnishings should not be taken to indicate the final position of power points, TV connection points and the like. Prospective purchasers must refer to the contract for sale for the list of inclusions. All graphics, including tile layout, balustrades, planting, louvres and sunshading devices, are indicative only. NOTE: Bulkheads necessary for services are not depicted. Floor plans are at an unspecified scale. Plans do not show additional features within each lot such as hot water systems, service yards, letterboxes and side and rear retaining walls. Purchaser option noted on floor plans is located on some lots only and is available at purchaser cost only at time of sale. 30/11/2017 [A]



BASEMENT



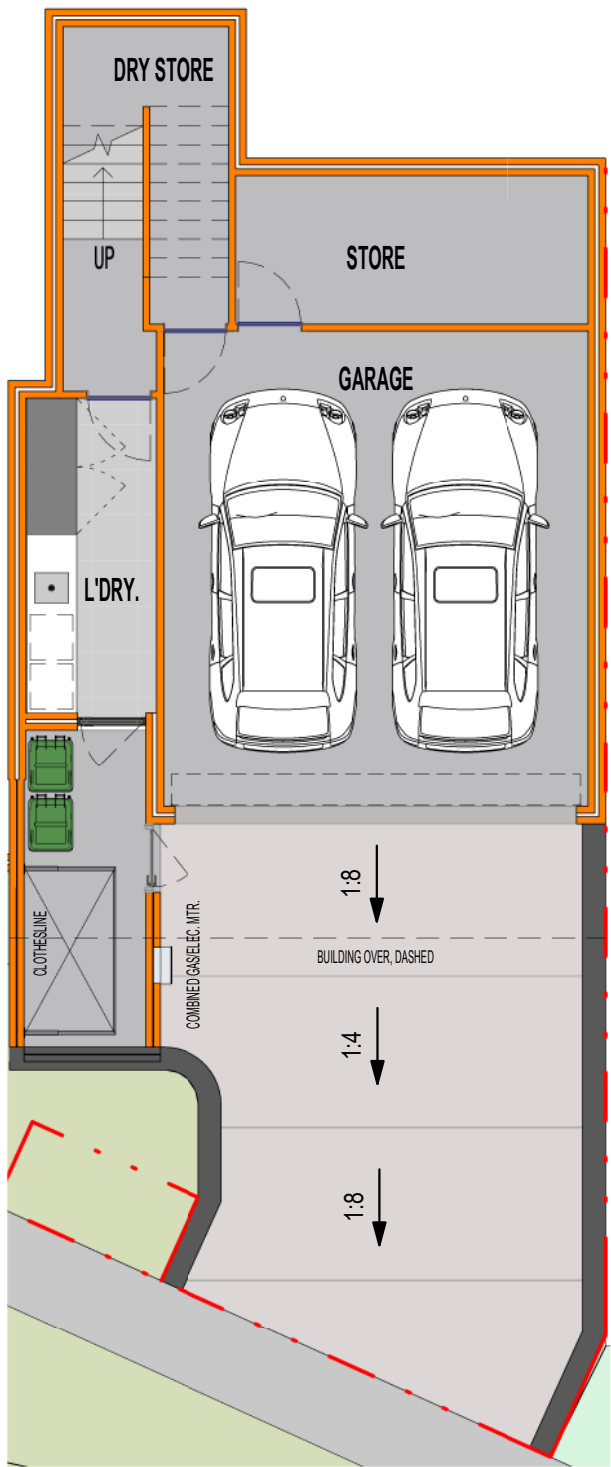
GROUND



FIRST



OPTION 1:  
ENSUITE GROUND  
FLOOR



BASEMENT



GROUND



FIRST

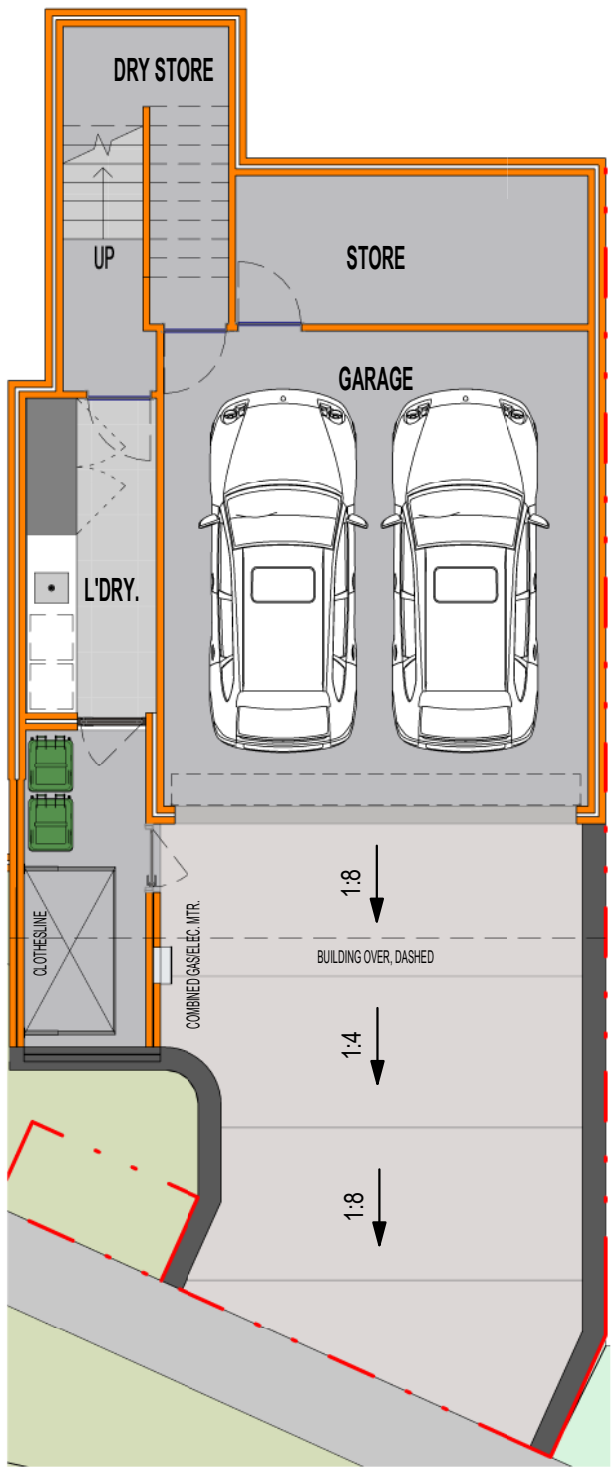
**DISCLAIMER**  
Please note that this floor plan was produced prior to completion of construction. The information contained herein is believed to be correct but is not guaranteed. Dimensions and areas are approximate. Changes will undoubtedly be made during development and subject to change without notice in accordance with the provision of the contract for sale. The furniture and furnishings depicted are not included with any sale and furnishings should not be taken to indicate the final position of power points, TV connection points and the like. Prospective purchasers must refer to the contract for sale for the list of inclusions. All graphics, including tile layout, balustrades, planting, louvres and sunshading devices, are indicative only. NOTE: Bulkheads necessary for services are not depicted. Floor plans are at an unspecified scale. Plans do not show additional features within each lot such as hot water systems, service yards, letterboxes and side and rear retaining walls. Purchaser option noted on floor plans is located on some lots only and is available at purchaser cost only at time of sale. 30/11/2017 [A]



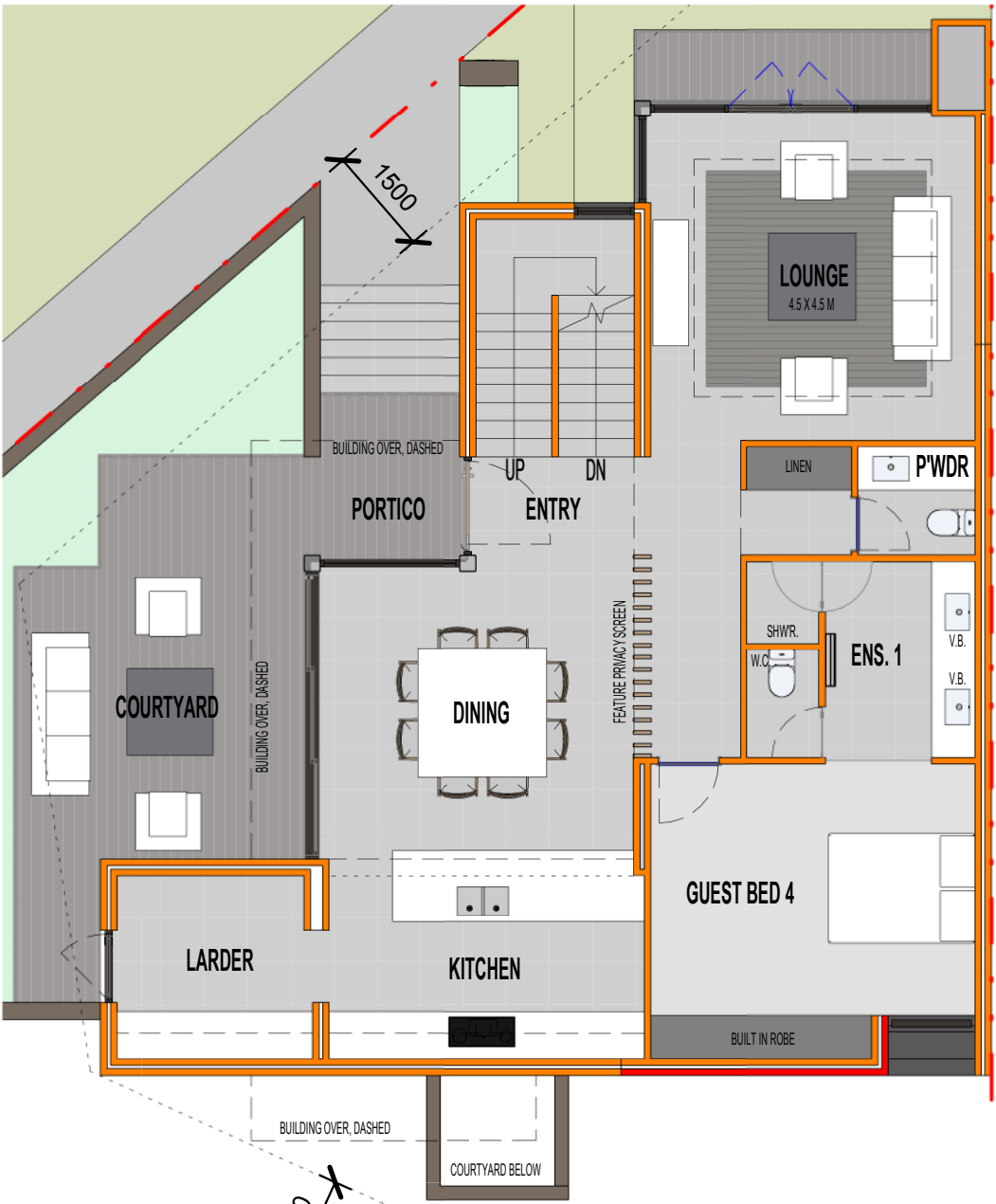
OPTION 2:  
ENSUITE FIRST FLOOR



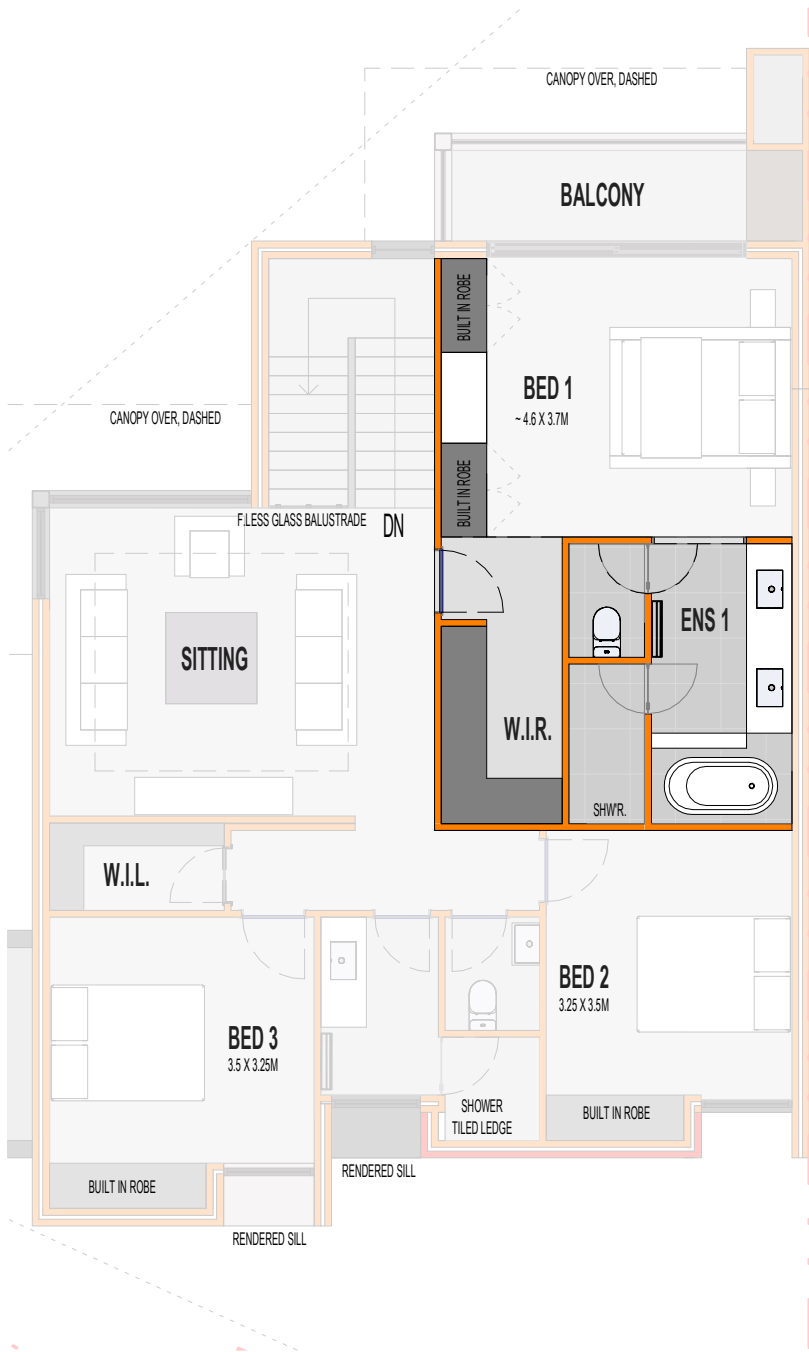
**DISCLAIMER**  
Please note that this floor plan was produced prior to completion of construction. The information contained herein is believed to be correct but is not guaranteed. Dimensions and areas are approximate. Changes will undoubtedly be made during development and subject to change without notice in accordance with the provision of the contract for sale. The furniture and furnishings depicted are not included with any sale and furnishings should not be taken to indicate the final position of power points, TV connection points and the like. Prospective purchasers must refer to the contract for sale for the list of inclusions. All graphics, including tile layout, balustrades, planting, louvres and sunshading devices, are indicative only. NOTE: Bulkheads necessary for services are not depicted. Floor plans are at an unspecified scale. Plans do not show additional features within each lot such as hot water systems, service yards, letterboxes and side and rear retaining walls. Purchaser option noted on floor plans is located on some lots only and is available at purchaser cost only at time of sale. 30/11/2017 [A]



BASEMENT



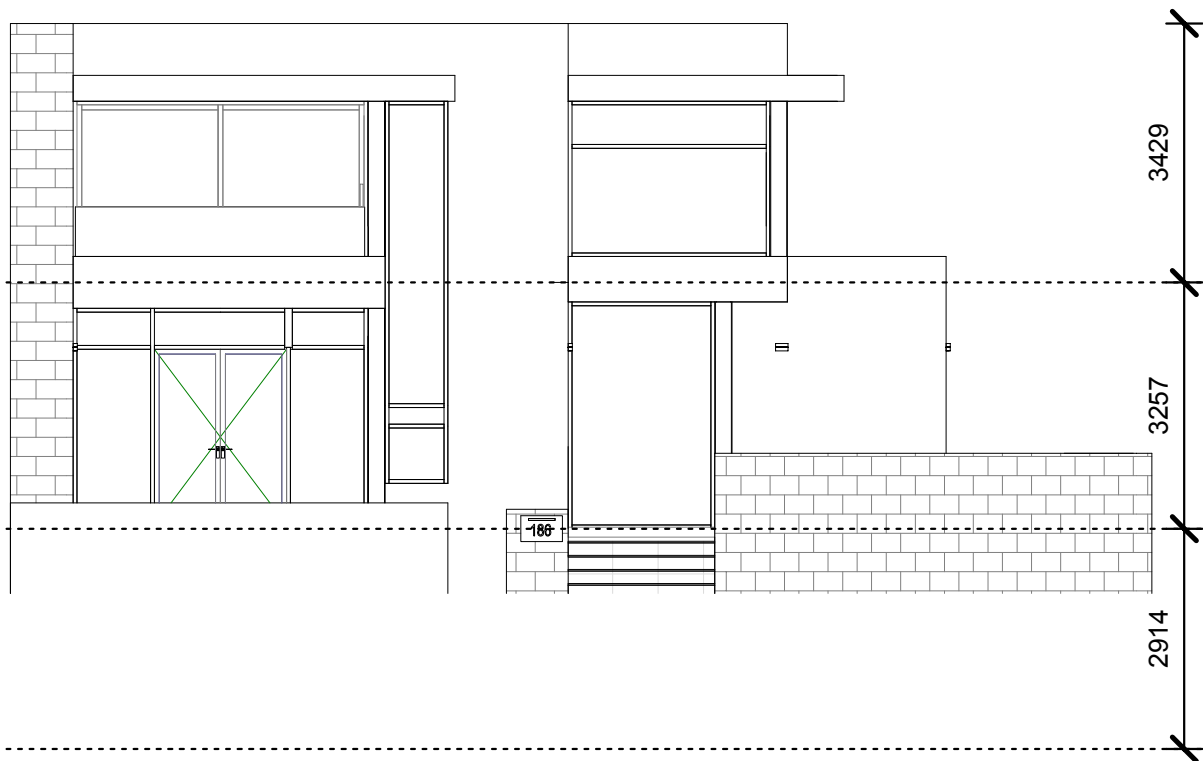
GROUND



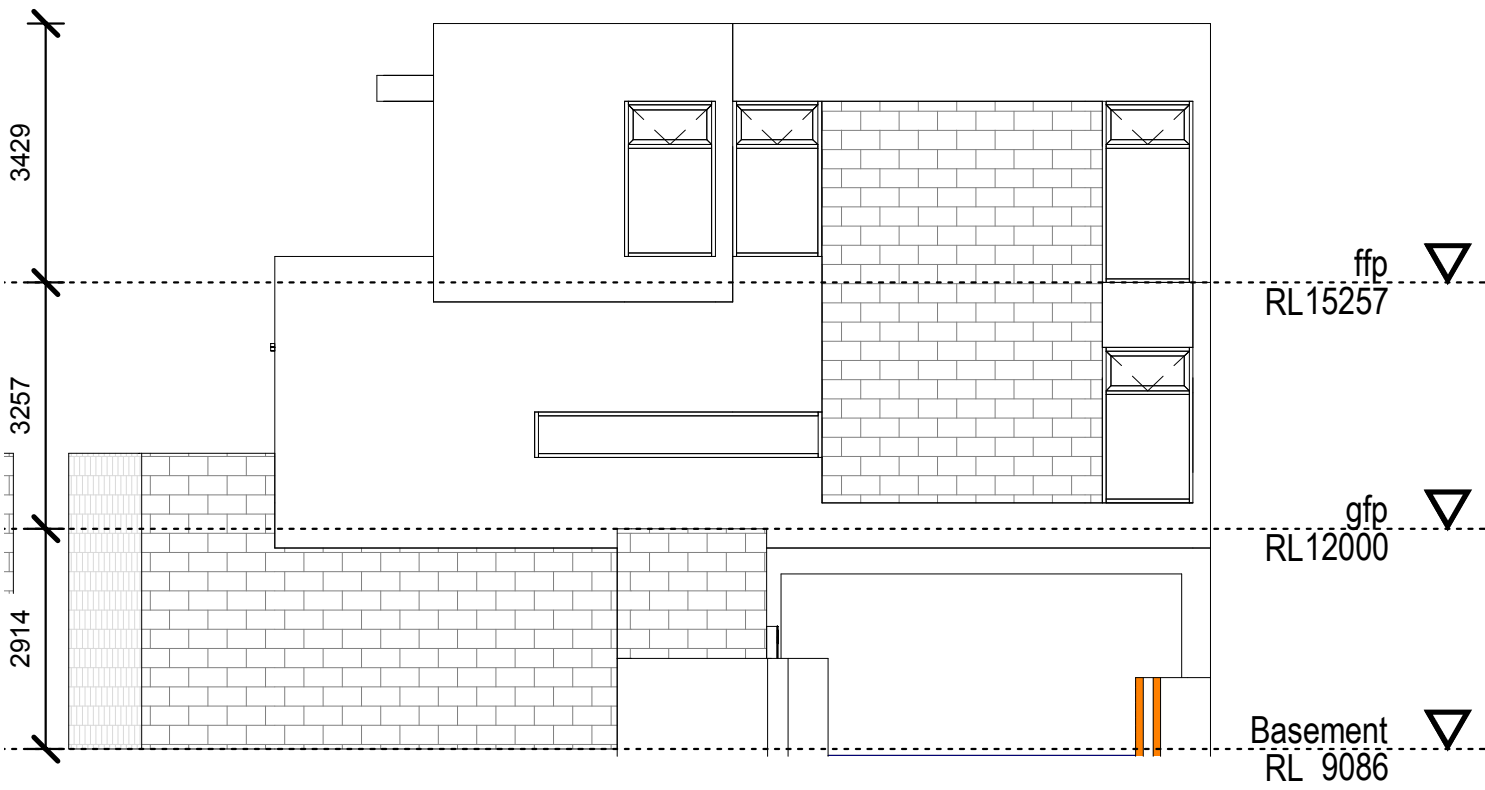
FIRST



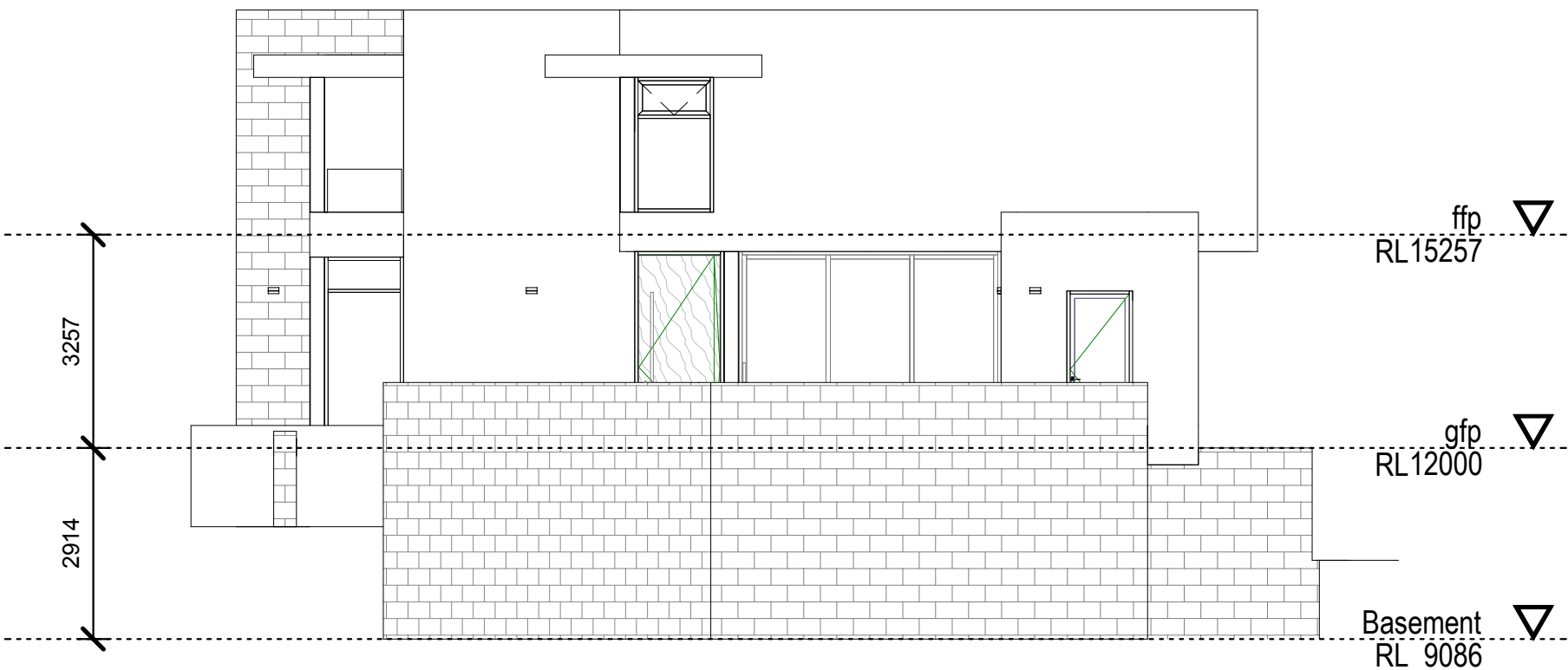
ELEVATIONS




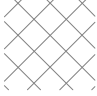

EAST



WEST



NORTH

-  SELECT STONE CLADDING
-  SELECT TILE CLADDING
-  SELECT FACE BRICK CLADDING

**DISCLAIMER**  
Please note that this floor plan was produced prior to completion of construction. The information contained herein is believed to be correct but is not guaranteed. Dimensions and areas are approximate. Changes will undoubtedly be made during development and subject to change without notice in accordance with the provision of the contract for sale. The furniture and furnishings depicted are not included with any sale and furnishings should not be taken to indicate the final position of power points, TV connection points and the like. Prospective purchasers must refer to the contract for sale for the list of inclusions. All graphics, including tile layout, balustrades, planting, louvres and sunshading devices, are indicative only. NOTE: Bulkheads necessary for services are not depicted. Floor plans are at an unspecified scale. Plans do not show additional features within each lot such as hot water systems, service yards, letterboxes and side and rear retaining walls. Purchaser option noted on floor plans is located on some lots only and is available at purchaser cost only at time of sale. 30/11/2017 [A]



