

174



The Peninsula
BURSWOOD



3 BEDROOM OPTION

AREA SCHEDULE (TOTAL)

Total Area	278m ²
Total Internal Area (including Garage)	250m ²
Total Internal Living Area	212m ²

AREA SCHEDULE (DETAILED)

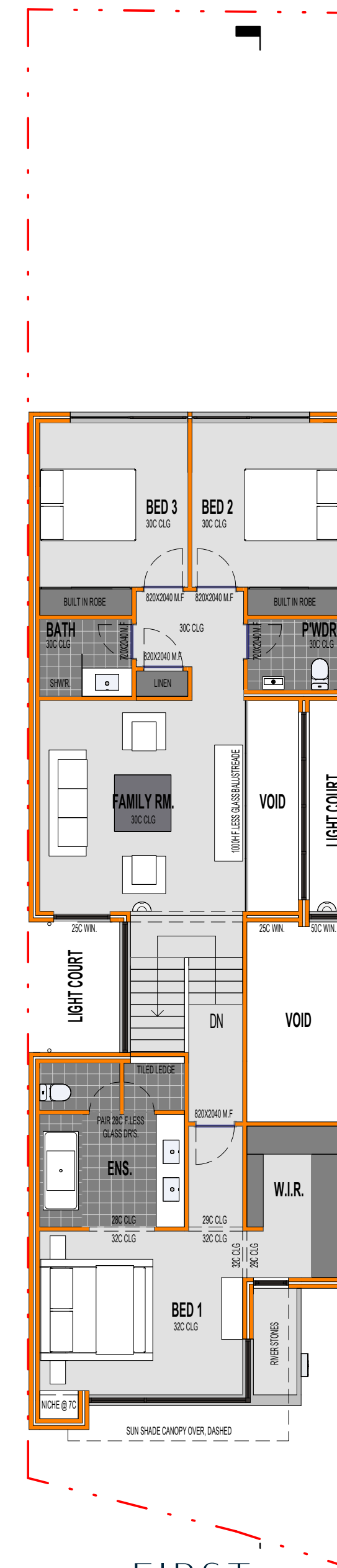
Ground Floor Area (excluding Garage)	81m ²
First Floor Area	131m ²
Garage	38m ²
Landscape Lightwell	4m ²
Drying Court	5m ²
Alfresco	11m ²
Deck	8m ²

DISCLAIMER

Please note that this floor plan was produced prior to completion of construction. The information contained herein is believed to be correct but is not guaranteed. Dimensions and areas are approximate. Changes will undoubtedly be made during development and subject to change without notice in accordance with the provision of the contract for sale. The furniture and furnishings depicted are not included with any sale and furnishings should not be taken to indicate the final position of power points, TV connection points and the like. Prospective purchasers must refer to the contract for sale for the list of inclusions. All graphics, including tile layout, balustrades, planting, louvers and sunshading devices, are indicative only. NOTE: Bulkheads necessary for services are not depicted. Floor plans are at an unspecified scale. Plans do not show additional features within each lot such as hot water systems, service yards, letterboxes and side and rear retaining walls. Purchaser option noted on floor plans is located on some lots only and is available at purchaser cost only at time of sale. 30/04/2018 [A]



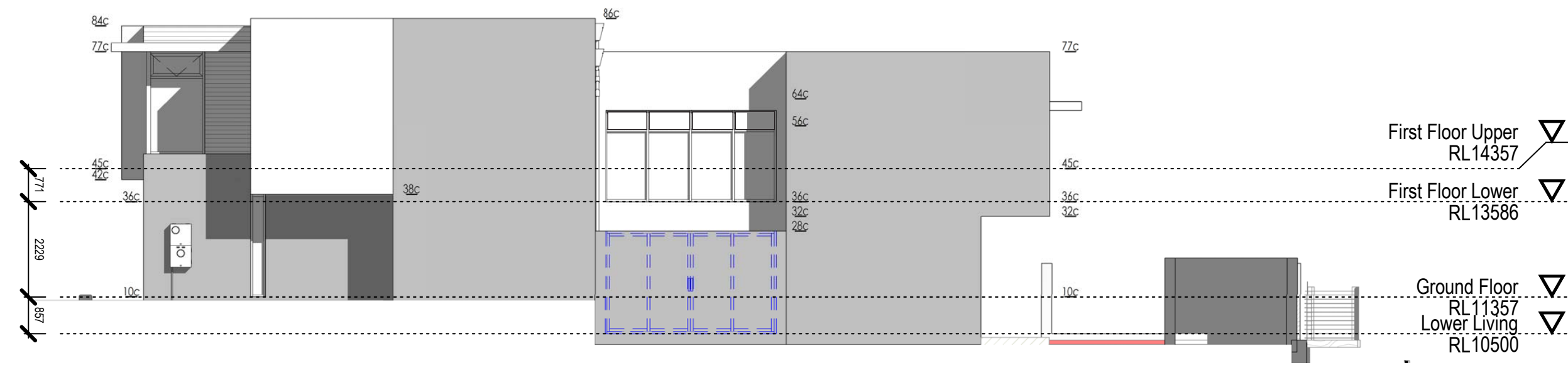
GROUND



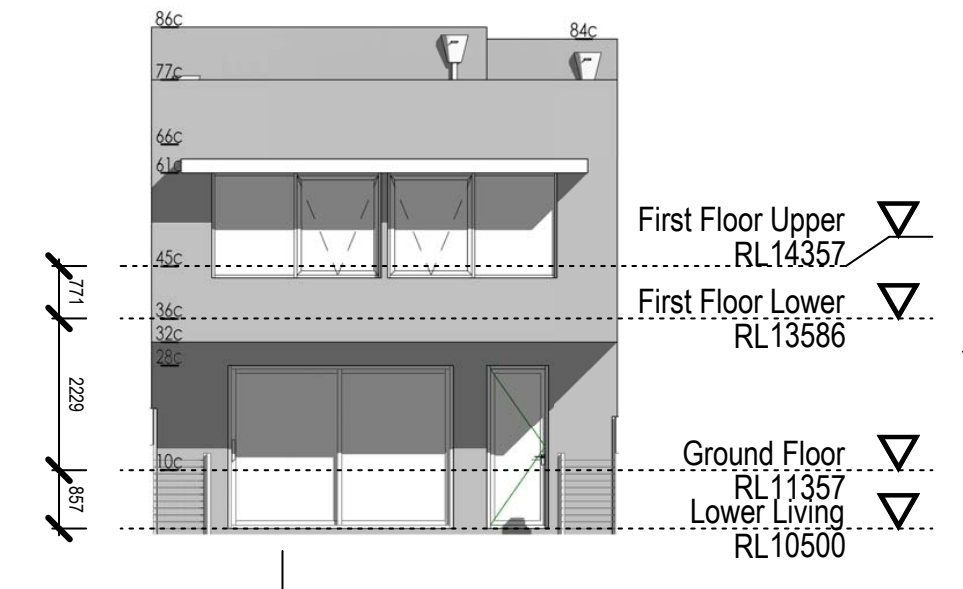
FIRST



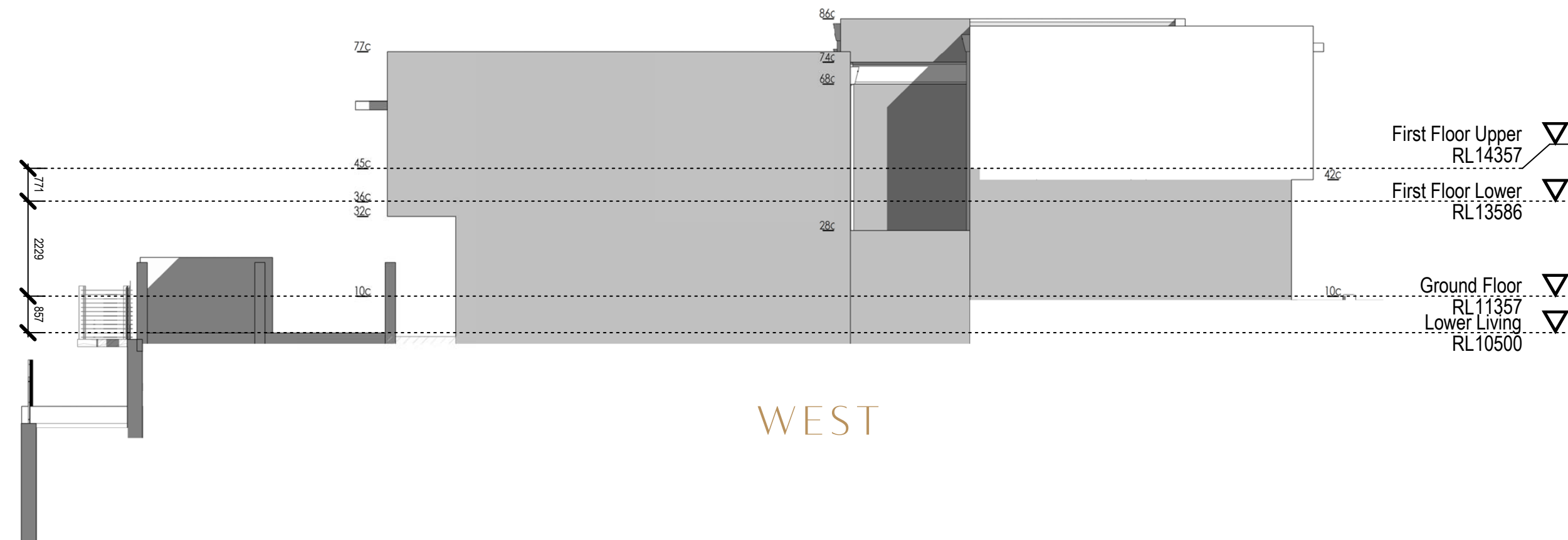
3 BEDROOM ELEVATIONS



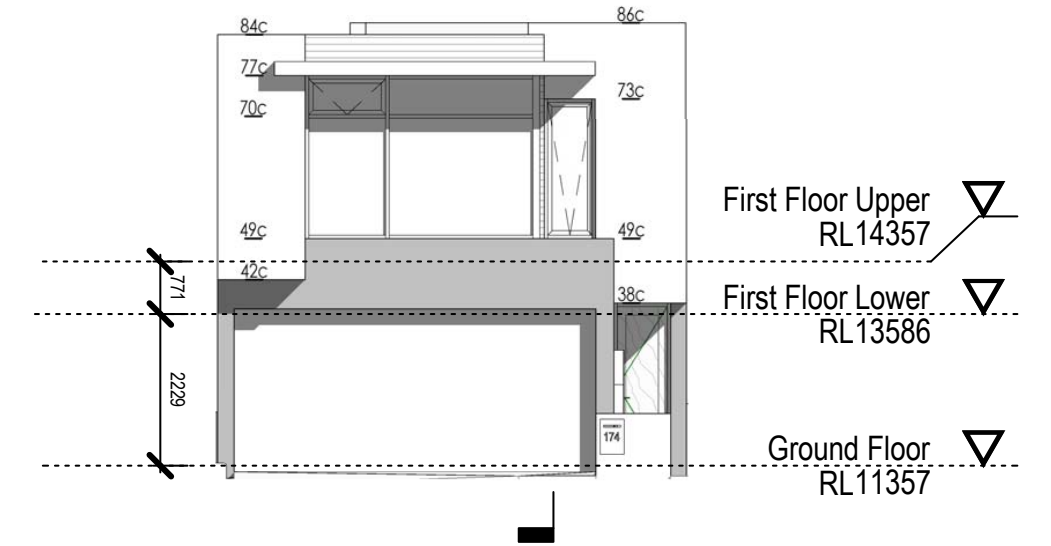
EAST



NORTH



WEST



SOUTH

DISCLAIMER

Please note that this floor plan was produced prior to completion of construction. The information contained herein is believed to be correct but is not guaranteed. Dimensions and areas are approximate. Changes will undoubtedly be made during development and subject to change without notice in accordance with the provision of the contract for sale. The furniture and furnishings depicted are not included with any sale and furnishings should not be taken to indicate the final position of power points, TV connection points and the like. Prospective purchasers must refer to the contract for sale for the list of inclusions. All graphics, including tile layout, balustrades, planting, louvres and sunshading devices, are indicative only. NOTE: Bulkheads necessary for services are not depicted. Floor plans are at an unspecified scale. Plans do not show additional features within each lot such as hot water systems, service yards, letterboxes and side and rear retaining walls. Purchaser option noted on floor plans is located on some lots only and is available at purchaser cost only at time of sale. 30/04/2018 [A]



4 BEDROOM OPTION

AREA SCHEDULE (TOTAL)

Total Area	339m ²
Total Internal Area (including Garage)	270m ²
Total Internal Living Area	232m ²

AREA SCHEDULE (DETAILED)

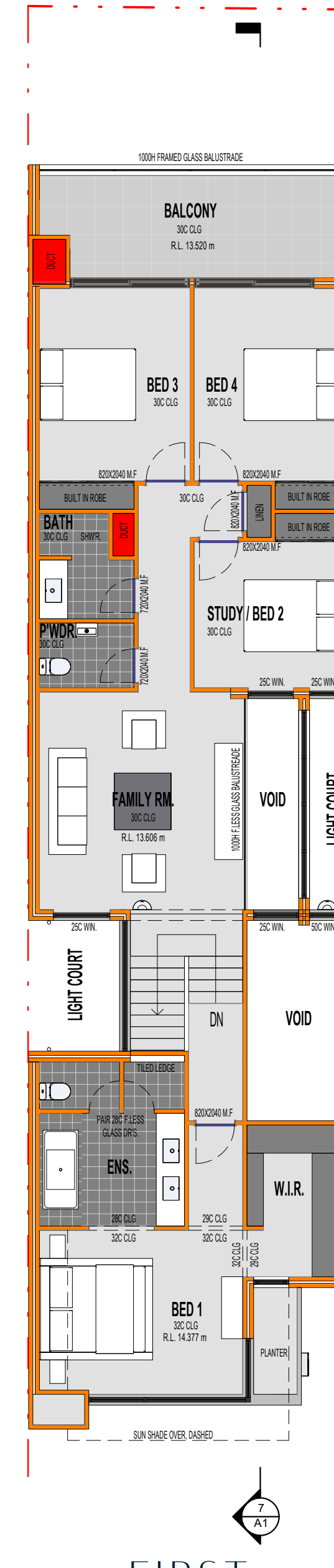
Ground Floor Area (excluding Garage)	81m ²
First Floor Area	151m ²
Garage	38m ²
Landscape Lightwell	4m ²
Drying Court	5m ²
Alfresco	36m ²
Deck	8m ²
Balcony	16m ²

DISCLAIMER

Please note that this floor plan was produced prior to completion of construction. The information contained herein is believed to be correct but is not guaranteed. Dimensions and areas are approximate. Changes will undoubtedly be made during development and subject to change without notice in accordance with the provision of the contract for sale. The furniture and furnishings depicted are not included with any sale and furnishings should not be taken to indicate the final position of power points, TV connection points and the like. Prospective purchasers must refer to the contract for sale for the list of inclusions. All graphics, including tile layout, balustrades, planting, louvers and sunshading devices, are indicative only. NOTE: Bulkheads necessary for services are not depicted. Floor plans are at an unspecified scale. Plans do not show additional features within each lot such as hot water systems, service yards, letterboxes and side and rear retaining walls. Purchaser option noted on floor plans is located on some lots only and is available at purchaser cost only at time of sale. 30/04/2018 [A]



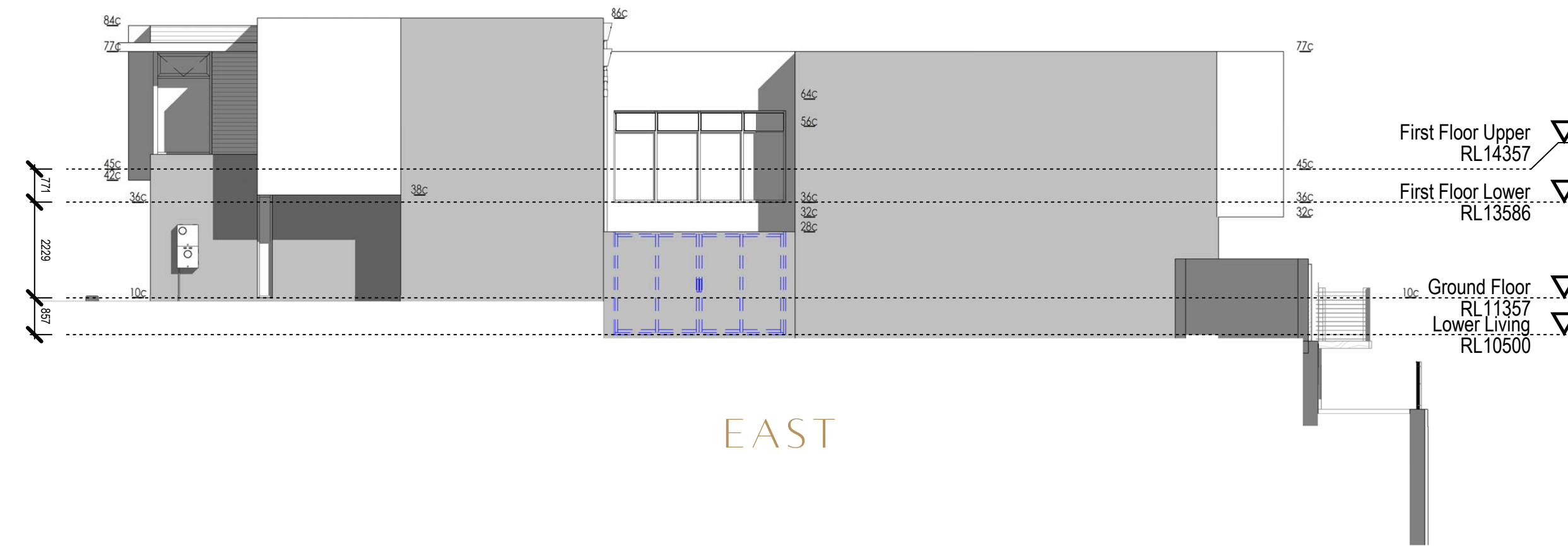
GROUND



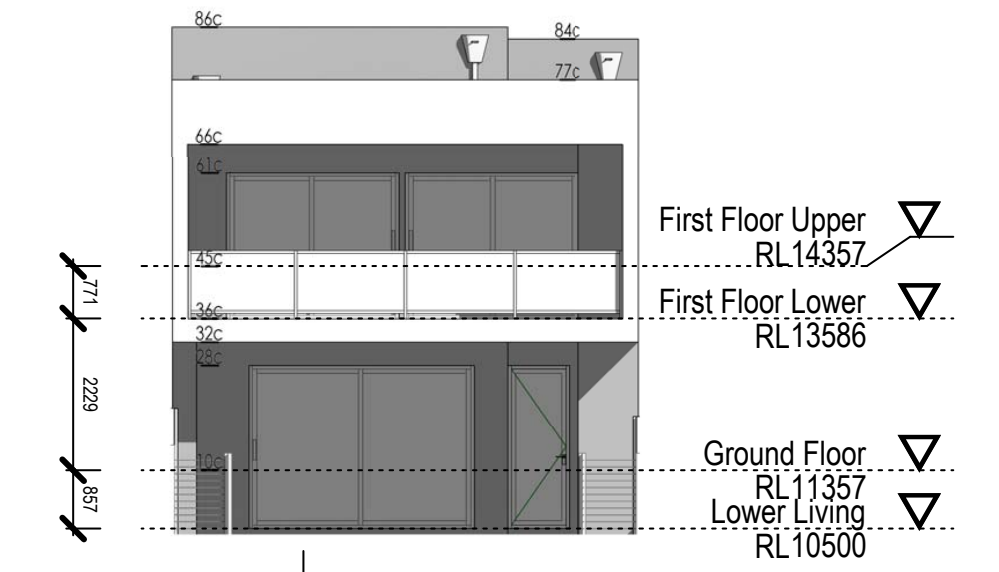
FIRST



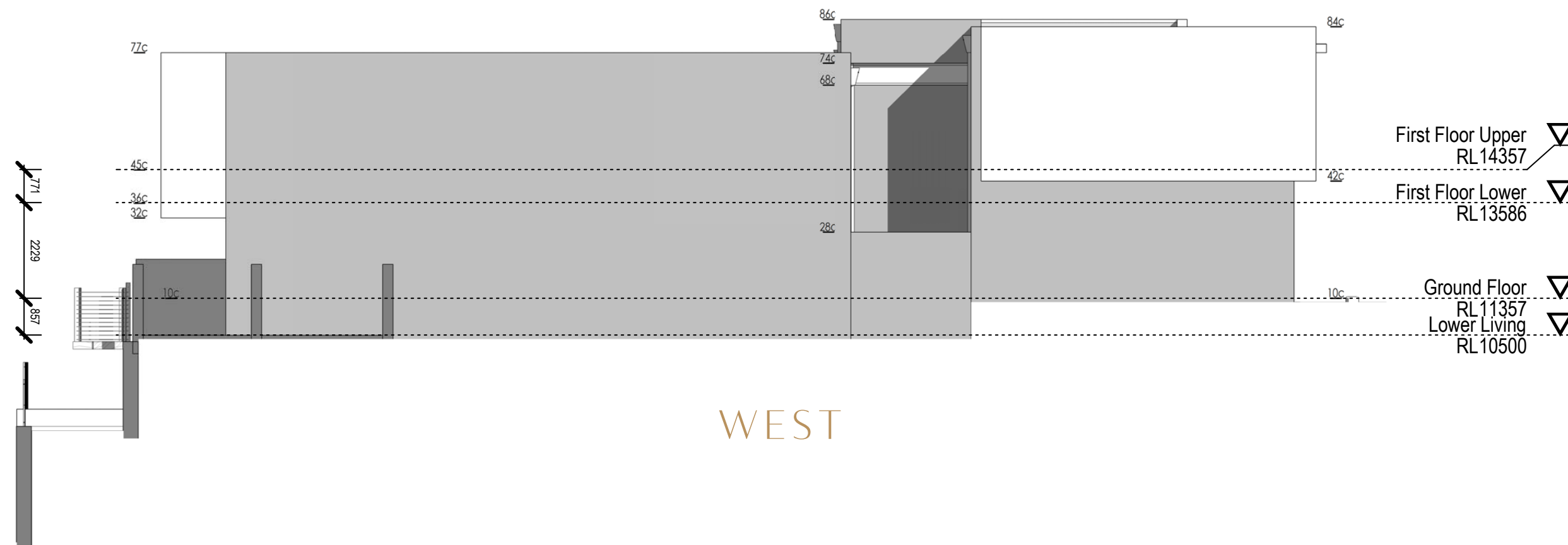
4 BEDROOM ELEVATIONS



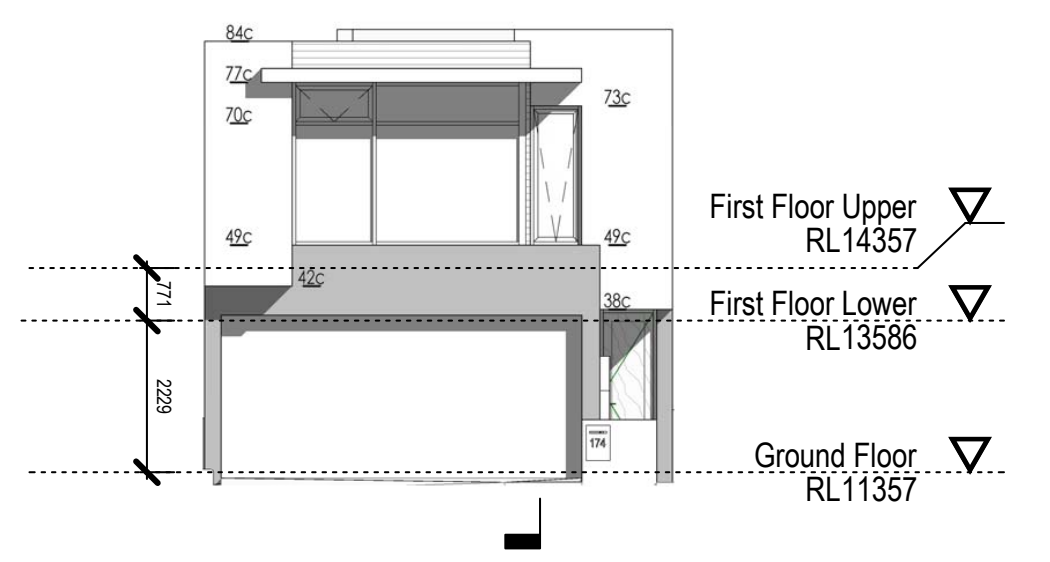
EAST



NORTH



WEST



SOUTH

DISCLAIMER
Please note that this floor plan was produced prior to completion of construction. The information contained herein is believed to be correct but is not guaranteed. Dimensions and areas are approximate. Changes will undoubtedly be made during development and subject to change without notice in accordance with the provision of the contract for sale. The furniture and furnishings depicted are not included with any sale and furnishings should not be taken to indicate the final position of power points, TV connection points and the like. Prospective purchasers must refer to the contract for sale for the list of inclusions. All graphics, including tile layout, balustrades, planting, louvers and sunshading devices, are indicative only. NOTE: Bulkheads necessary for services are not depicted. Floor plans are at an unspecified scale. Plans do not show additional features within each lot such as hot water systems, service yards, letterboxes and side and rear retaining walls. Purchaser option noted on floor plans is located on some lots only and is available at purchaser cost only at time of sale. 30/04/2018 [A]





The Peninsula
BURSWOOD

